



**CENTURY 21.**  
Grenada Grenadines

**Paula La Touche**  
Sales Associate

Office: (473) 440-5227  
paula@c21grenada.com  
https://c21grenada.com

CENTURY 21 Grenada Grenadines Real Estate, Excel Plaza, St.George, Grenada West Indies

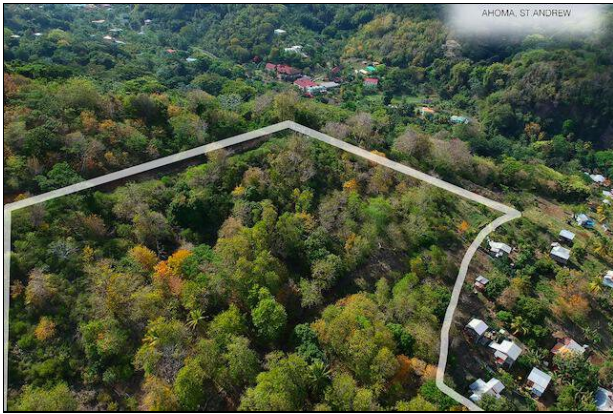
## 9 Acres - Ahoma Prime Development

Tivoli (St.Andrew) 📍 Grenada

**MLS# 1145517**

Vacant Land - Development

**736,552**



**District/Area:** Tivoli (St.Andrew)

**Region/Country:** Grenada

**Class:** Commercial

**Prop.Name:** 9 Acres - Ahoma Prime Development

**Land Area:** 9 Acres

**Prop.Type:** Vacant Land - Development

**Oper.Costs:**

### Features and Amenities

#### Near By

- Shopping
- Agricultural Activities
- Commercial Activities

### Remarks

9 acres of prime residential land ready for development In the popular village of Ahoma, near Tivoli. The area is ideal for a housing scheme or to develop and sell as single plots/houses. It also has agricultural business development potential. All amenities/utilities available. Poised in a beautiful location offering amazing views, clean air plus all the perks of country living, this land is easily accessible and close enough to the main road for Grenville or Sauteurs. Also just half a mile from the center of the vibrant, cultural village of Tivoli, a mile from La Poterie and two miles from Hermitage, the development would be ideal for families and those wishing to enjoy the country with an easy commute to work. Tivoli has a beautiful Catholic Church and school, many grocery shops, bars, a gas station, a bakery, post office and medical station. Hermitage has similar amenities, shops, businesses and medical station plus a police station. The land is also close to two famous tourist attractions, Belmont Estate and River Antoine Estate both offer tours and thriving restaurants.