

CENTURY 21
Grenada Grenadines

Renee La Touche
Rental Associate

Office: (473) 440-5227
renee@c21grenada.com
https://c21grenada.com

CENTURY 21 Grenada Grenadines Real Estate, Excel Plaza, St.George, Grenada West Indies

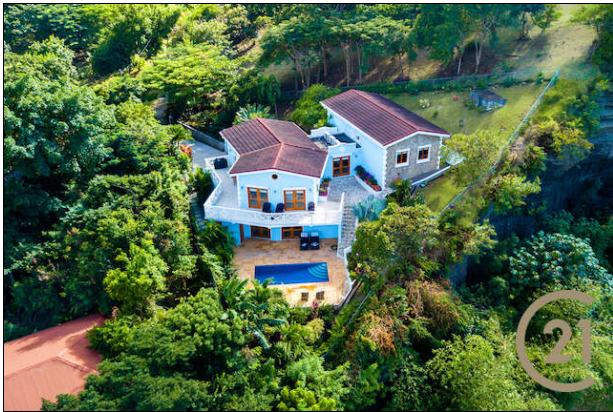
Silk Cotton Heights Villa

Port Louis (St.George) 📍 Grenada

MLS# 1151618

Single Family Homes

2,200,000



District/Area: Port Louis (St.George)

Region/Country: Grenada

Prop.Type: Single Family Homes

Prop.View: Ocean View

Beds: 3

Baths: 3½

Living Space: 3,245 ft²

Land Area: 13,581 ft²

Class: Residential

Features and Amenities

Condition

Well Maintained

Parking - Type

Driveway

Patio - Deck - Porch

Veranda

Outdoor Features

Flower Garden

Air Conditioning

Air Conditioning

Near By

- Playground
- School(s)
- Shopping
- Golf Course
- Town
- Fitness Center
- Tennis Courts
- Church
- Elementary School
- High School
- Hospital
- Park - Green Area
- Commercial Activities
- College
- Public Transportation
- Recreational Activities
- Restaurants
- Marina

Furnished

Fully Furnished

Yard / Landscaping

Large Fenced Yard

Swimming Pool

- On-Site Pool
- Inground Pool

Rooms

Bedroom
Master Bedroom
Open Concept
Kitchen / Living / Dining

Distinctive Features

Luxurious

Location Features

Quiet Area
No neighbours in the back

Floors

Tiles

Roofing

Clay Tiles

Windows

Wood

Remarks

Exquisite and luxurious property located in the well-known Port Louis Marina, that features a magnificent island and sea view. It features three spacious, en-suite bedrooms that offer custom-built furniture. The master bedroom is located on the lower floor which features an entertainment area, office space and conveniently opens onto the pool deck. The open concept living, kitchen and dining room leads onto a semicircular shaped balcony that captures an enamoring view of the Marina, Carenage and other surrounding areas. The beautifully designed pool deck is perfect for relaxation or entertaining family and friends. Additionally, with the purchase of the property, the new homeowner/s will have access to amenities/facilities offered by Port Louis. The marina is located only 3 minutes away from the town of St. George's and the sub-city of Grand Anse.